

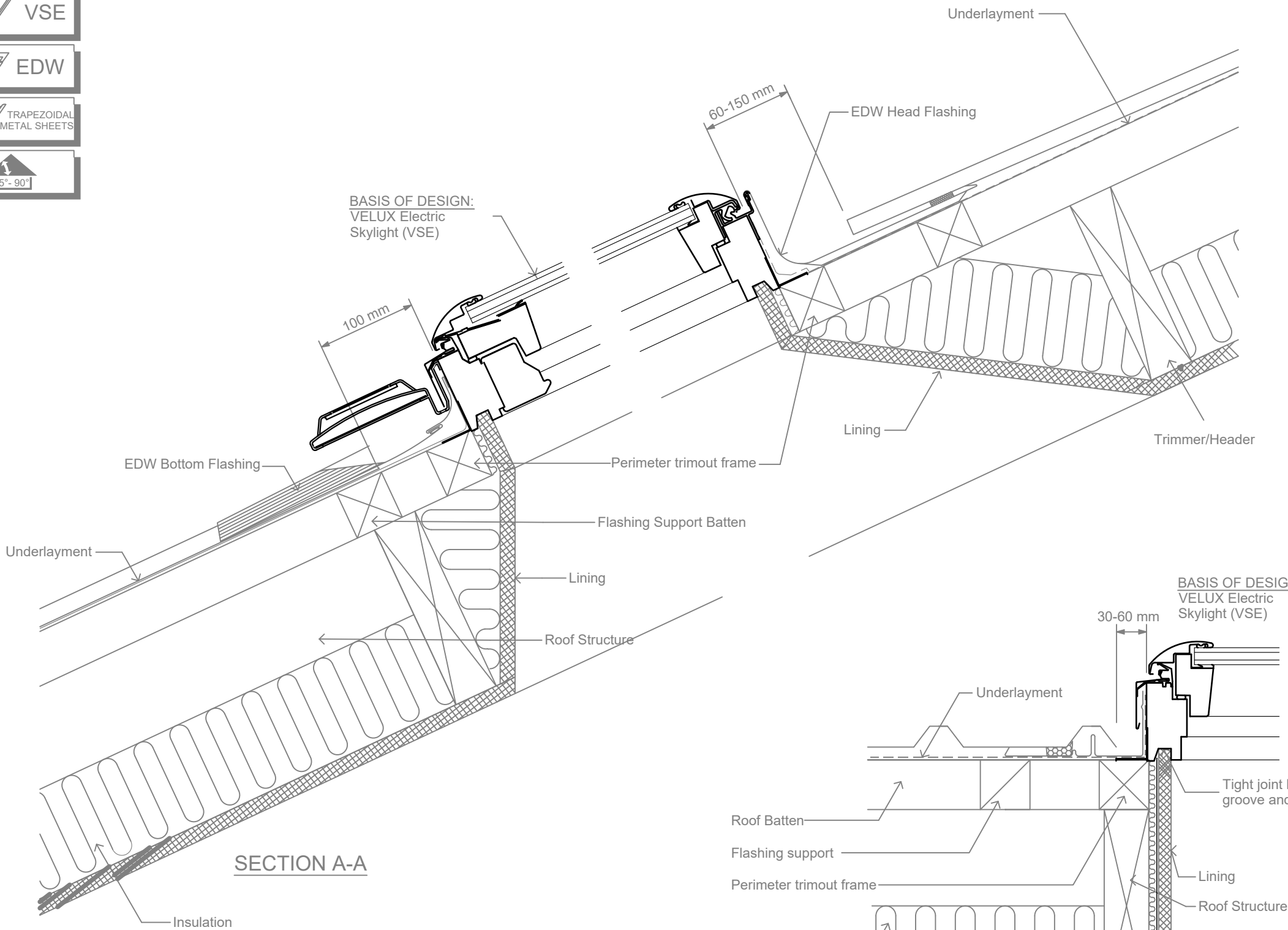
VSE

EDW

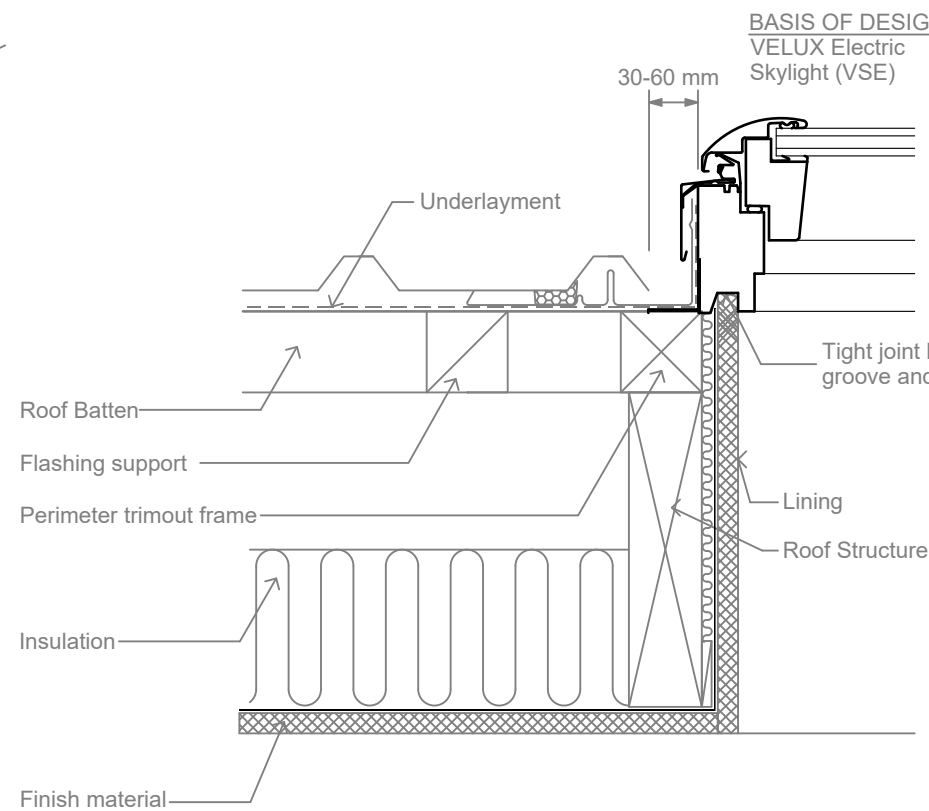
TRAPEZOIDAL METAL SHEETS

15° - 90°

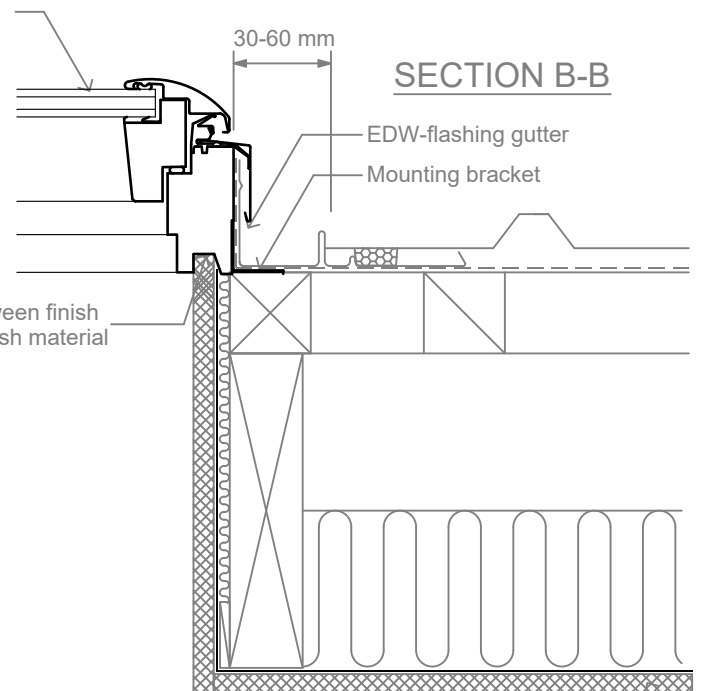
BASIS OF DESIGN:
 VELUX Electric
 Skylight (VSE)



SECTION A-A

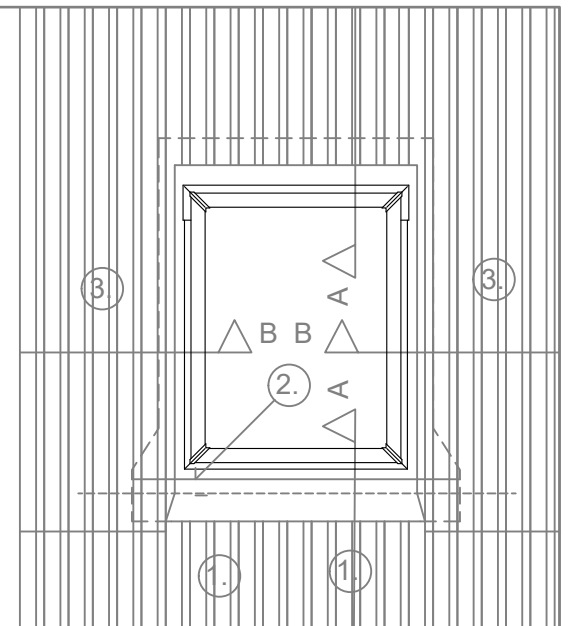


BASIS OF DESIGN:
 VELUX Electric
 Skylight (VSE)



SECTION B-B

ELEVATION



VELUX Skylight installed in new metal
 roofing.

1. The sheets are fitted 100 mm from the bottom frame
2. The flashing is mounted
3. Fit the metal sheets

VSE - Electric Skylight and EDW Flashing in Trapezoidal Metal Roof

VELUX
 Sky-Product Management

NEW ZEALAND LTD.
 0800 650 445

	Name	Date
Drawn by		Jan 18
Checked by		Jan 18
Drawing No.		

This drawing is an instrument of service and is provided for informational use only.

© 2011 VELUX GROUP

© VELUX is a registered trademark